

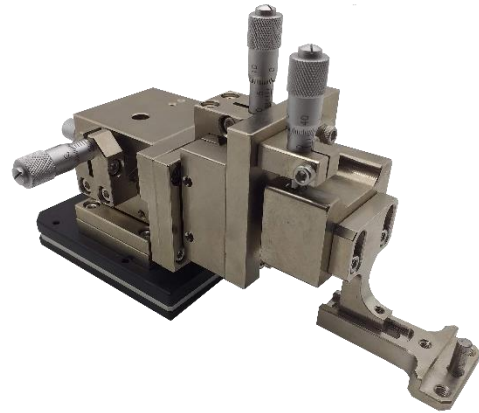
RF Probe Positioner – Version 400

DATA SHEET

HPS-PST06-400

The PST06-400 is an stable and extremely precise RF probe positioner built for research R&D and university lab probing use.

The of probe positioner is specifically designed to address the requirements of research personnel - simplicity and ease



SPECIFICATIONS

Dimensions	84mm X 103mm X209mm (3.3" X 4" X 8.2") (W,H,L)
Weight	1.5 kg (3.3 lbs.)
Base	Magnetic base or Vacuum base with on/off switch
X-Y-Z Movement	Fine micrometer adjustment – 6 mm (X, Y, Z) Min scale is 10um Z axis prevent sliding
Theta Movement	Travel: 10 degrees (fine)
Material	Aluminum electroless nickel plating
Options & Accessories	Probe Long connecting rod Anritsu, keysight, R&S, Frequency Multipliers Holder

Note: Data and specifications vary depending on probe system configurations and accessories

